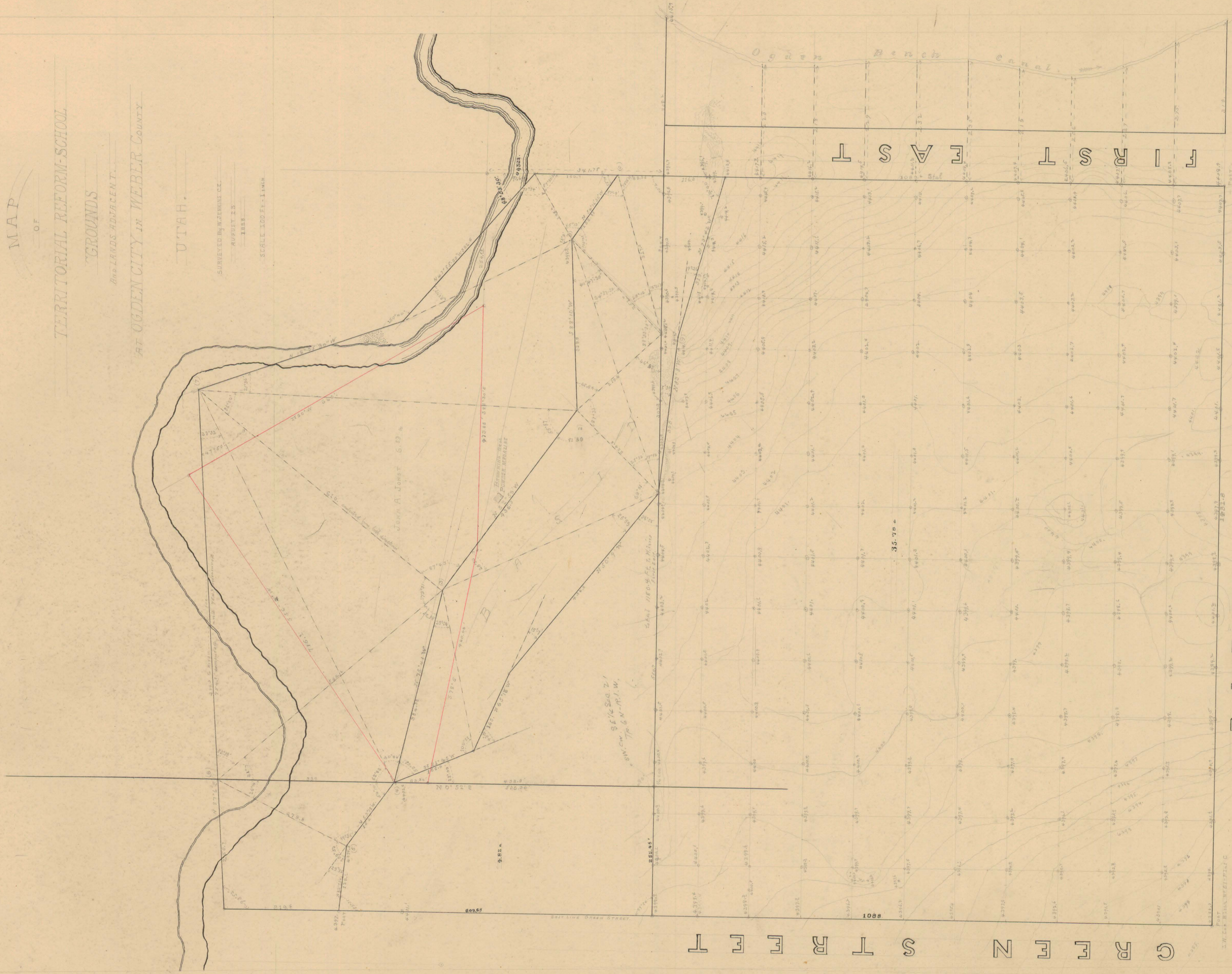


MAP  
OF  
TERRITORIAL REFORM-SCHOOL  
"GROUNDS"  
ADJACENT TO  
AT OGDEN CITY IN WEBER COUNTY  
UTAH.

SURVEYED BY J. J. JONES  
AUGUST 13  
1888  
SCALE 100 FT. = 1 INCH



Scale 100 ft. = 1 in.

Scale 100 ft. = 1 in.

FOR  
W. L. BROWN & COMPANY  
OGDEN, UTAH